



Componentes de Tráfico Vertical



catalog



CTV

- We speak your language.
- We handle your orders from the beginning to the end.
- We provide you with customized drawings.
- We give our clients a constant technical support.
- Our after-sales service is quick and effective.

OUR SERVICE WILL GIVE YOU A LIFT

Componentes de Tráfico Vertical (CTV) is a service company with an international outreach which offers a la carte and standard solutions for complete lifts and refurbs/modernisations; we put at your disposition a wide range of components and spares for lifts from the top European manufactures as well as platform lifts, goods lifts and disabled platforms. Services is our occupation.

CTV works world wide, shipping equipment to our clients desired destination taking care of the whole process should our client so request and all in their own language.



HOTEL CLUB VAL D'ANFA



Country: Morocco.
 City: Casablanca.
 Year of installation: 2007.
 Lift type: 9 x 3VF E-320 kg, 0,85 m/s, 7 stops.

MINISTÈRE DE HABOUS



Country: Morocco.
 City: Casablanca.
 Year of installation: 2005.
 Lift type:
 ·Duplex 3VF 630 kg, 1 m/s, 5 stops.
 ·Simplex 3VF 630 kg, 1 m/s, 6 stops.

HARD DAYS NIGHT HOTEL (BEATLES HOTEL)



Country: England.
 City: Liverpool.
 Year of installation: 2006.
 Lift type: Panoramic 3VF 630 kg MRL, 1 m/s, 9 stops.

INMARK TOWER



Country: Australia.
 City: Sidney.
 Year of installation: 2009.
 Lift type:
 ·Duplex 3VF 1275kg, 3,15m/s, 34 stops.
 ·Duplex 3VF 1275kg, 3,15m/s, 35 stops.

MAYFAIR HOTEL



Country: England.
 City: London.
 Year of installation: 2005.
 Lift type:
 ·3VF 630 kg MRL, 1,6 m/s, 8 stops.
 ·Double entry 3VF 400 MRL kg 1 m/s, 10 stops.
 ·3VF 375 kg, MRL, 1 m/s, 10 stops.
 ·3VF 300 kg, MRL, 1 m/s, 9 stops.
 ·3VF 1150 kg, MRL, 1,6 m/s, 10 stops.
 ·Double entry 3VF 630 kg, MRL, 1 m/s, 11 stops.
 ·3VF 450 kg, MRL, 1 m/s, 10 stops.

MAUSOLEUM



Country: Angola.
 City: Luanda.
 Year of installation: 2008.
 Lift type: Drum lift 1:1-180 kg, 0,60 m/s, 12 stops.

CENTRAL BANK SEYCHELLES



Country: Seychelles.
 City: Victoria.
 Year of installation: 2005.
 Lift Type: 3VF 1500 kg, 1 m/s, 3 stops.

CONTROLLER AND ELECTRICAL PARTS

NEW LIFT
NEUE ELEKTRONISCHE WEGE



EDEL, SL.
ELECTRÓNICA DE ELEVADORES



Carlos Silva s.a.

MACHINES

ZIEHL-ABEGG



WITTUR

ALBERTO SASSI

COMAQ

SICOR

FAER

FAYMESA

LiftEquip
ELEVATOR COMPONENTS



HAUSHAHN
Qualität in Jeder Beziehung

LOHER

DYNATECH

MECHANICAL PARTS



WITTUR

Hidral



EMESA



LiftEquip
ELEVATOR COMPONENTS

CENTODUCATI
s.p.a.

TTV
TÉCNICAS DE TRANSPORTE VERTICAL

Aufzugteile BT.

BUCHER
HYDRAULICS

HYDRAULICS



DOORS



OVERSPEED GOVERNOR



CTV

OVERLOAD DEVICES



GUIDES



PULLEYS



INVERTERS



LIGHT CURTAINS



ISOLATIONS




PUSHES







SAFETY GEARS







ROLLERS










CTV

BUFFERS



ROPES



LOCKS



DIVERS



DESIGN
IN THREE
DIMENSIONS



CTV



DETAILS
OF
COMPONENTS





CAR LIFTS

À LA CARTE



Car walls: galvanised plate lined with melamine (M-01) or laminated (L-01) with decorative satin AISI 304 stainless steel profiles.

Ceiling: folding black plastic-covered plate (skinplate) with opal-white metacrylate.

Floor: black rubber circles.

Profiles: satin AISI 304 stainless steel.

Car entrance: satin AISI 304 stainless steel.

Mirror: 4 mm safety glass with polished edge, 1/2 height on back wall.

Car operating panel: column (optional).

Handrail: not including.



M-01/L-01
car

Car walls: galvanised plate lined with melamine (M-02) or laminated (L-02), vertical slats and satin between-slats.

Ceiling: folding black plastic-covered plate (skinplate) with opal-white metacrylate.

Floor: black rubber circles.

Profiles: satin AISI 304 stainless steel.

Car entrance: satin AISI 304 stainless steel.

Mirror: 4 mm safety glass with polished edge, 1/2 height in back wall.

Car operating panel: column (optional).

Handrail: not including.



M-02/L-02
car

Car walls: galvanised plate lined with melamine (M-03) or laminated (L-03), horizontal slats and satin AISI 304 stainless steel between-slats.

Ceiling: folding black plastic-covered plate (skinplate) with opal-white metacrylate.

Floor: anti-slip black rubber.

Profiles: satin AISI 304 stainless steel.

Car entrance: satin AISI 304 stainless steel.

Mirror: 4 mm safety glass with polished edge, vertical slat in back wall.

Car operating panel: column (optional).

Handrail: not including.



M-03/L-03
car

Car walls: galvanised plate lined with melamine (M-04) or laminated (L-04), smooth car walls.

Ceiling: folding black plastic-covered plate (skinplate) with opal-white metacrylate.

Floor: black rubber circles.

Profiles: black plastic-covered plate (skinplate).

Car entrance: satin AISI 304 stainless steel.

Mirror: 4 mm safety glass with polished edge, 1/2 height on back wall.

Car operating panel: column (optional).

Handrail: not including.



M-04/L-04
car

CTV



L-05
car

Car walls: galvanised plate lined with post-formed laminated with decorative laminated between slats.
Ceiling: folding black plastic-covered plate (skinplate) with opal-white metacrylate.
Floor: anti-slip black rubber.
Profiles: satin AISI 304 stainless steel.
Car entrance: satin AISI 304 stainless steel.
Mirror: 4 mm safety glass with polished edge, 1/2 height on back wall.
Car operating panel: column.
Handrail: not including.



S-01
car

Car walls: plastic-covered plate (skinplate).
Ceiling: folding black plastic-covered plate (skinplate) with opal-white metacrylate.
Floor: black rubber circles.
Profiles: black plastic-covered plate (skinplate).
Car entrance: satin AISI 304 stainless steel.
Mirror: 4 mm safety glass with polished edge, 1/2 height on black wall.
Car operating panel: column (optional).
Handrail: not including.



I-01
car

Car walls: galvanised plate lined with satin AISI 304 stainless steel between slats.
Ceiling: folding black plastic-covered plate (skinplate) with opal white metacrylate.
Floor: black rubber circles.
Profiles: satin AISI 304 stainless steel.
Car entrance: satin AISI 304 stainless steel.
Mirror: 4 mm safety glass with polished edge, upper band and 1/2 height on back wall.
Car operating panel: column (optional).
Handrail: not including.



A-01
car

Car walls: galvanised plate lined with laminated and decorative Canvas stainless steel profiles .
Ceiling: laminated and Canvas stainless steel with halogen lamps.
Floor: granite type 3.
Profiles: Canvas stainless steel.
Car entrance: satin AISI 304 stainless steel.
Mirror: 4 mm safety glass with polished edge, vertical slat on back wall, bronze.
Car operating panel: Column in Canvas stainless steel with lighting.
Handrail: round stainless steel.

CTV

Car walls: galvanised plate lined with satin AISI 304 stainless steel.

Ceiling: shaded 3+3 laminated glass with satin ASI 304 stainless steel frame.

Floor: silestone type 2.

Profiles: polished blue stainless steel.

Car entrance: satin AISI 304 stainless steel.

Mirror: 4 mm safety glass with polished edge, 1/2 height on back wall, bronze.

Car operating panel: column polished blue stainless steel.

Handrail: not including.

A-02
car

Car walls: galvanised plate lined with laminated.

Ceiling: laminated and satin AISI 304 stainless steel with halogen lamps on shaded 3+3 laminated glass.

Floor: silestone type 2.

Profiles: satin AISI 304 stainless steel.

Car entrance: satin AISI 304 stainless steel.

Mirror: 4 mm safety glass with polished edge on three walls, white old-looking.

Car operating panel: plate in satin AISI 304 stainless steel.

Handrail: round stainless steel.

A-03
car

Car walls : galvanised plate lined with laminated and safety glass.

Ceiling: laminated and satin AISI 304 stainless steel with halogen lamps on shaded 3+3 laminated glass.

Floor: silestone type 2.

Profiles: satin AISI 304 stainless steel.

Car entrance: satin AISI 304 stainless steel.

Mirror: 4 mm safety glass with polished edge on three walls, white old-looking.

Car operating panel: plate in satin AISI 304 stainless steel.

Handrail: not including.

SEMI
PANORAMIC
car

CARS À LA CARTE (EXEMPLES)

CTV



Car walls: galvanised plate with laminated.

Ceiling: black primed plate with LEDs.

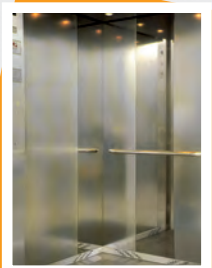
Floor: stone.

Car entrance: satin stainless steel 4 mm safety glass.

Handrail: stainless steel.

TIERRA

car



Car walls: galvanised plate with stainless steel.

Ceiling: stainless steel plate with LEDs .

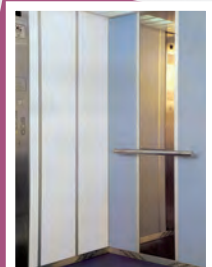
Floor: granite.

Car entrance: satin stainless steel 4 mm safety glass.

Handrail: round stainless steel.

HIELO

car



Car walls: galvanised plate with laminated.

Ceiling: black primed plate with fluorescents.

Floor: PVC.

Car entrance: satin stainless steel 4 mm safety glass.

Handrail: round stainless steel.

AGUA

car



ABSTRACT

2352 ATLAS
BLUE



5056 OCHER



5059 MOKA



MELANIN

33 CREAM



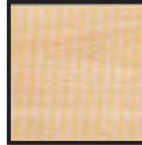
37 BEIGE



41 GREY



428 BEECH



499
ALUMINIUM



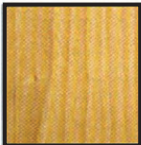
440
CHERRYWOOD



15 BLUE



550 WAHUT



LAMINATES

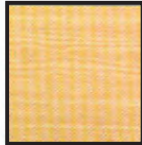
1118 AMBER
MAPLE



1139
CHERRYWOOD



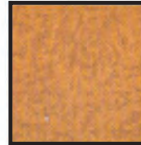
2887 SABOY
BEECH



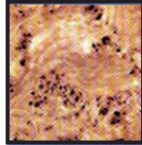
2958 BEECH



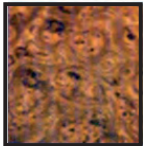
3011 CARAMEL
MAPLE



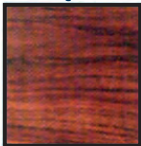
1122 MAPLE



1137 GOLDEN
MAPLE



1293
SEQUOIA



2273
SERINGA



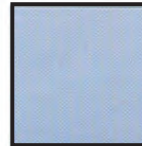
2833 SAND



5493 GLACIER
BLUE



7884 CHINA
BLUE





SKINPLATES

B1 BLUE



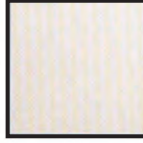
N3 BLACK



N1 GREY



A13 CREAM



A1 WHITE



F2SM
ST/STEEL



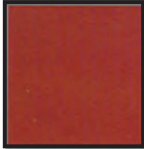
G1 YELLOW



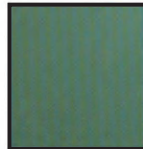
V1 LIGHT
GREEN



R24SMAM
RED



V8SME
GREEN



STAINLESS STEEL

BRUSHED



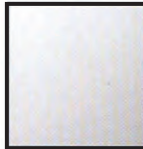
MIRROR



LEATHER



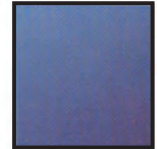
CANVAS



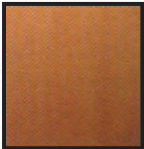
GOLD



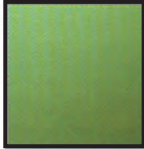
BLUE



RED



GREEN

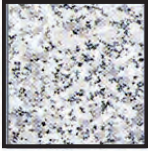


GRANITES

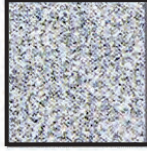
ROSÉ



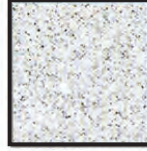
PEARL GREY



GREY



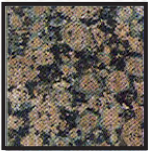
CRYSTAL WHITE



BLACK



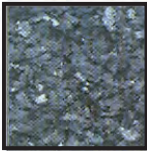
GREEN



DEEP BLACK



BLUE GREY



SILESTONES

BEIGE



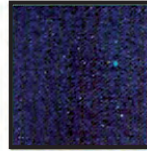
GREY



WHITE



NAVY BLUE



GREEN



BLUE



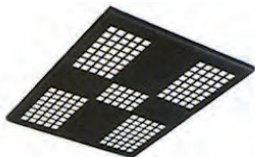
BLACK



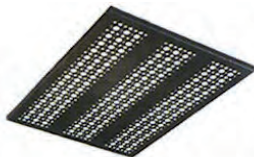


CEILING

TYPE 1



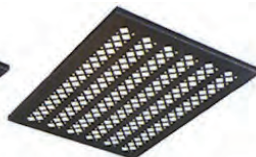
TYPE 2



TYPE 3



TYPE 4



TYPE 5



TYPE 6



WHITE
GRILLE



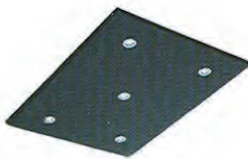
MIRROR
WITH
HALOGENS



ST/STEEL
WITH HALOGENS



PRIMED WITH
HALOGENS



SATIN GLASS



MIRROR

1/2 MIRROR



3/4 MIRROR



1/4 MIRROR



PERIMETRAL MIRROR



COLOURS
SILVER OR BRONZE.

DECORATIONS

COMPLETE PANEL



PANELS WITHOUT SEPARATION



PANELS WITH SEPARATION



GORGE DROITE
(MELANIN, LAMINATES, ST. STEEL)



GORGE BISEAU
(ST. STEEL)



GORGE ARRONDIE
(LAMINATES)



OMEGA INOXYDABLE



GONDOLE ALUMINIUM

1 FONDS (LAMINÉ, INOXYDABLE)
2 COUVERTURE (ALUMINIUM NOIR)

HANDRAIL

ST.STEEL STRAIGHT TUBE



BLACK STRAIGHT TUBE



MIRROR ST. STEEL ROUND TUBE



BRUSHED ST. STEEL ROUND CURVED TUBE



BRUSHED ST. STEEL ROUND CURVED TUBE



GOLDEN ROUND CURVED TUBE



BLACK ROUND CURVED





FORMICAS

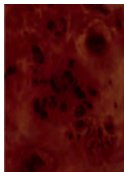
F1614 UN



F9012 NAT



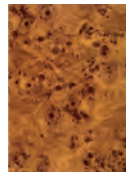
F2559 GLS



F6928 NAT



F1118 GLS



F5147 UN



F9011 NAT



F3699 UN



F6936 NAT



F5167 UN



F6930 NAT



K7555 UN



F3188 GLS



F3210



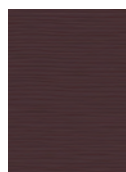
F4172



F4177



F2200



F7912



F2828 MIC



F0231 MIC



K3209 MIC



F6901 VEL



K2046 UN

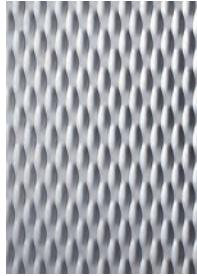


ST. STEEL

K220



5WL



LEATHER



LINEN



ICE FLOWER



- These are some options for our à la carte cars. Please, ask for other options or consult our car lift catalog.

MACHINES



	300 kg	450 kg	600 kg
Type:	S30	S30	S58
Machine:	240095A/AC2	240095A AC2	240095A/AC2
Brake:	Drum	Drum	Drum
Load (kg):	300	450	600
Car weight with frame (kg):	450	600	850
Balance (%):	50	50	50
Counterweight (kg):	600	825	1150
Static Load (kg):	1369	1894	2626
Roping type:	1:1	1:1	1:1
Starts per hour:	180	180	180
Ropes number (mm):	3	3	4
Ropes diameter (mm):	10	10	10
Pulley diameter (mm):	560	600	480
Groove type:	V	V	V
Groove angle:	35	35	35
Undercut angle:	90	90	90

CTV



GEKO

Static load max (kg): 2.400
Powers range (kW): 3,3/5,9
Duty load range (kg): 320/480 (1:1)

LEO



Static load max (kg): 3.000
Powers range VF (kW): 3,3+/11
Duty load range (kg): 450/1.000 (1/1 ; 2/1)



MF48

Static load max (kg): 3.100
Powers range VF (kW): 3,3/11,4
Duty load range (kg): 450/1.125



TORO

Static load max (kg): 4.200
Powers range VF (kW): 3,3/20,6
Duty load range (kg): 630/2.000



MF84

Static load max (kg): 6.000
Powers range (kW): 5,9/25,00
Duty load range (kg): 320/480 (1:1)



MF94

Static load max (kg): 8.000
Powers range VF (kW): 11,0/27,9
Duty load range (kg): 2.000/4.000



MB95

Static load max (kg): 12.000
Powers range VF (kW): 14,7/50,7
Duty load range (kg): 1.600/3.500

MB108



Static load max (kg): 15.000
Powers range VF (kW): 25,7/91,9
Duty load range (kg): 2.000/5.000

With the ZETATOP SM160, Ziehl-Abegg offers an innovative traction machine for elevators in the lower load range and for extremely compact lift shafts. This ZETATOP grants the advanced demands, that are claimed on such a machine. A machine room is not necessary, the machine is installed directly in the shaft head. The traction sheave with a diameter of 160 mm allows already the use of the new wire ropes with a diameter of 4 mm.



SM160

The Ziehl-Abegg ZETATOP SM200 offers an innovative gearless elevator machine with a traction sheave of 240 mm for 6/6,5 mm suspension ropes. Now with the small ZETATOP machine-roomless elevators, payloads up to 1,000 kg can be realised.



SM200

The Ziehl-Abegg ZETATOP SM225 offers an innovative traction sheave motor for cantilever elevators. The ZETATOP meets all requirements for this kind of motor: A machine-room is not necessary, the motor is mounted directly in the shaft head. As a result of the extremely high torque of the ZETATOP motor, the suspension of the elevator can be 1:1. No diverting pulleys are necessary, therefore the construction is simple and cost effective.



SM225

The Ziehl-Abegg ZETATOP SM250 offers an innovative traction sheave motor for cantilever elevators. The ZETATOP meets all requirements for this kind of motor: A machine-room is not necessary, the motor is mounted directly in the shaft head. As a result of the extremely high torque of the ZETATOP motor, the suspension of the elevator can be 1:1. No diverting pulleys are necessary, therefore the construction is simple and cost effective.



SM250

Les ZETATOP SM250.80C et SM250.100C sont les deux plus grosses machines sans réducteur de la gamme ZETATOP. Ils sont aussi bien prévus pour des applications avec ou sans local techniques. Ces moteurs sont prévus pour des vitesses de déplacement jusqu'à 4m/s. Pour cela, le SM250C offre une poulie de traction à double enroulement. Le frein manuel est aussi possible. Une plaque de base avec des poulies secondaires complète la gamme.



SM250C



TORNADO



Type *(1)	Roping factor	Sheave diameter (mm)	Rope diameter (mm)	Max. rated load (kg)*(2)	Max. load on shaft (kg)*(3)	Rated torque	Max. torque	Weight
D-60	1:1	240	6, 6.5, 6.7	225	1300	150	225	150
		320	8	150				
	2:1	240	6, 6.5, 6.7	450	1200	150		
		320	8	320				
D-80	1:1	240	6, 6.5, 6.7	320	1500	210	300	160
		320	8	225				
	2:1	240	6, 6.5, 6.7	630	1400	210		
		320	8	450				
D-120	1:1	240	6, 6.5, 6.7	450	2500	300	450	180
		320	8	320				
	2:1	240	6, 6.5, 6.7	800	2400	280		
		320	8	630				
D-160	1:1	240	6, 6.5, 6.7	630	3000	420	600	220
		320	8	450				
	2:1	240	6, 6.5, 6.7	1000	2500	360		
		320	8	800				
D-220	1:1	240	6, 6.5, 6.7	800	3500	550	825	250
		320	8	630				
	2:1	240	6, 6.5, 6.7	1250	2800	450		
		320	8	1000				
D-280	1:1	240	6, 6.5, 6.7	1000	4000	700	1050	300
		320	8	800				
	2:1	240	6, 6.5, 6.7	1500	3500	550		
		320	8	1250				
D-360	1:1	320	8	1000	4500	900	1350	360
	2:1	320	8	2000				

*(1) Standard available speeds: 0.63, 1 and 1.6 m/s. If you need a speed different from the standards, please contact our technical department.

*(2) Maximum load calculated for counterweight factor 50%, starting car acceleration 0.5 m/s², compensation chain and duty cycle 35%.

*(3) Maximum load calculated for a lifetime over 35.000 hours, Standard applied ISO 281:1991.

C
ONTROLLERS

The K2 series controllers cover the market demands with a very wide range of lifts installations. Most parameters, such as simplex or duplex operation, full/down collective, etc can be easily programmed using the programming console already incorporated in the main board.

By adapting EDEL-64275 multifunction module to our electric and hydraulic controllers, they can be configured for more complex lift installations.

If you wish to adapt a different brand binary display, add a display filter 54279.

You can also use it to connect next departure arrows or add one additional EDEL-64275 card, as well as one EDEL-54273 card. For duplex operation, connect two controllers by using EDEL-54272 communication wire (for both symmetrical and asymmetrical lifts).



General Features :

- Output for single-phase automatic doors at 230 VAC.
- Outputs for positional indicator or binary display.
- Auxiliary temporized output for applications such as motor cooling fan. Relay contact maximum intensity: 8 A, 250 Vac.
- Inputs to connect: reopening photocell, car door closing, excess weight, full load, motor thermic, car stop, landing and car firemen access key.
- Up to 24 levels in standard, 29 with can bus, by adding modules 64275.
- Outputs for indication: open doors, up, down, in operation at 24 VDC, 110 VAC and 210 VDC.
- Outputs for brake and cam at 65 VDC, 110 VDC, 120 VDC and 210 VDC.
- Outputs for luminous push-buttons at 24 VDC, 80 mA max.
- Outputs for full load and excess weight indication at 24 VDC.
- Safety series and contactors at 110 VAC.
- Electrical and mechanical block to avoid the simultaneous entrance of going up and going down contactors.

	Electric	Hydraulic
Levels	24 standard/29 CAN-Bus	24 standard/29 CAN-Bus
Regulations	En-81-1-2, Regulations: En-81-28/En-81-70/En-81-72/81-80	
Voltage	230V/400V	230V/400V
Motor	consulter	consulter
Failure indicator	yes, on card with LCD screen	
Reset	yes	
Connection	simplex / duplex / triplex / quadruplex	
Transformer outputs	multitension 50, 65, 100, 120, 210 V	
Series	110 VAC.	
Access code	optional	

CTV



main board **K2 SÉRIES**

- Main board up to 29 levels.
- Possibility of connection in simplex, duplex, triplex or quadruplex.
- Traditional connection wire to wire, CAN-Bus or mixed.
- Visualization of faults by LCD display informing about date, time, departure floor, arrival floor, direction, speed, and number of travels in same fault.
- Automatic traffic.
- Lifts resends.
- Historical of failures (last 100).
- Option of short or very short floors.
- Through access.
- Reopening signal as closed or open contact.
- Auxiliary relay for fan or car light.
- Gong signal.
- Language selection.
- 100% compatible with 54 series controllers.



I/O **EDEL K2 CARD**

- Card for the connection and monitoring of the main input/output signals to controller.
- Indicator leds in the board methacrylate allows knowing the status of the signals in every moment which is very helpful at the time of detecting failures or wrong connections.
- Control of the door operator and cam signals using relays.
- Allows connecting the card EDEL-Ins during the assembly, for the functioning of the lift in this mode without need of linking neither any series nor any other signal.
- Card for the connection and monitoring of the main input/output signals to controller.
- Indicator leds in the board methacrylate allows knowing the status of the signals in every moment which is very helpful at the time of detecting failures or wrong connections.
- Control of the door operator and cam signals using relays.
- Allows connecting the card EDEL-Ins during the assembly, for the functioning of the lift in this mode without need of linking neither any series nor any other signal.



car **CAN-BUS CARD**

- Lift car CAN-Bus communication card.
- Card includes speech synthesizer adjustable through a potentiometer.
- Allows with 20 wires getting to 29 levels.

General Features

Levels	24 standard/29 CAN-Bus
Regulations	EN-81-1
Voltage	230V/400V
Motor	5,5Cv–230V/10Cv–400V
Failure indicator	yes, on card with LCD screen
Reset	yes
Connection	simplex / duplex / triplex / quadruplex using K2 communication wire
Transformer outputs	multitension 50, 60, 110, 120 et 210V
Series	110 VAC
Access code	optional

SINGLE AND 2 SPEEDS ELECTRIC CONTROLLERS



- Meets with the Europe Norm EN-81.1.
- Possibility of work as Simplex, Duplex, Triplex, Quadruplex.
- Programming Console integrated on the main board.
- Facility in the adjustment of multiple parameters using console: times, configurations, functions, etc.
- Information of failures indicating: failure code, failure description, date, time, speed of the car, destination, rearming type.
- Historical of failures (last 100 failures).
- Automatic detection and memorization of n° of stops, distance between stops and total travel time.
- Blockades of controller by excessive travel time.
- An only controller for all the kind of elevators.
- Possibility of work with traditional installation or CAN-Bus at client election.
- Fast interpretation of lift status using leds in the principal inputs/outputs signals.
- Power supply 220Vac/380Vac.
- Transformer with multitension terminals for brake, cam and luminous indicators. Outputs: 45, 60, 100, 120 and 190 V.
- Output for binary positional indicator (Rotary or LCD display).
- Single-Phase and 3VF automatic door outputs.
- Inputs for photocell, maximum load, excess weight, door close push button and firefighter key signals.
- Cabinet brand HIMEL IP-55 dimensions 700x600x200



General Features

Levels	24 standard/29 CAN-Bus
Regulations	En-81-2
Voltage	230V/400V
Motor	10Cv-230V/15Cv-400V
Failure indicator	yes, on card with LCD screen
Reset	yes
Connection	simplex / duplex / triplex / quadruplex using k2 communication wire
Transformer outputs	multitension 50, 60, 110, 120 et 210V
Series	110 VAC
Access code	optional

- Meets with the Europe Norm EN-81.1.
- Possibility of work as Simplex, Duplex, Triplex, Quadruplex.
- Programming Console integrated on the main board.
- Facility in the adjustment of multiple parameters using console: times, configurations, functions, etc.
- Information of failures indicating: failure code, failure description, date, time, speed of the car, destination, rearming type.
- Historical of failures (last 100 failures).
- Automatic detection and memorization of n° of stops distance between stops and total travel time.
- Blockades of controller by excessive travel time.
- An only controller for all the kind of elevators.
- Possibility of work with traditional installation or CAN-Bus at client election.
- Fast interpretation of lift status using leds in the principal inputs/outputs signals.
- Power supply 220VAC/380VAC.
- Transformer with multitension terminals for brake, cam and luminous indicators.
- Outputs: 45, 60, 100, 120 and 190 V.
- Output for binary positional indicator (Rotary or LCD display).
- Single-Phase and 3VF automatic door outputs.
- Separate access to MCBs and RCDs.
- Led indicator on door cabinet for car out of floor.
- Rescue for power failure.
- Open/Closed door relevelling.
- Inputs for photocell, maximum load, excess weight, door close push button and firefighter key signals.
- Cabinet brand HIMEL IP-55 dimensions 860x600x200.

General Features

Levels	24 standard/29 CAN-Bus
Regulations	En-81-2
Voltage	230V/400V
Motor	10Cv–230V/15Cv–400V
Failure indicator	yes, on card with LCD screen
Reset	yes
Connection	simplex/duplex/triplex/quadruplex using K2 communication wire
Transformer outputs	multitension 50, 65, 110, 120 et 210V
Series	110 VAC
Access code	optional

HYDRAULIC CONTROLLERS



- Meets with the Europe Norm EN-81.1.
- Possibility of work as Simplex, Duplex, Triplex, Quadruplex.
- Programming Console integrated on the main board.
- Facility in the adjustment of multiple parameters using console: times, configurations, functions, etc.
- Information of failures indicating: failure code, failure description, date, time, speed of the car, destination, rearming type.
- Historical of failures (last 100 failures).
- Automatic detection and memorization of n° of stops distance between stops and total travel time.
- Blockades of controller by excessive travel time.
- An only controller for all the kind of elevators.
- Possibility of work with traditional installation or CAN-Bus at client election.
- Fast interpretation of lift status using leds in the principal inputs/outputs signals.
- Power supply 220VAC/380VAC.
- Transformer with multitension terminals for brake, cam and luminous indicators.
- Outputs: 45, 60, 100, 120 and 190 V.
- Output for binary positional indicator (Rotary or LCD display).
- Single-Phase and 3VF automatic door outputs.
- Led indicator on door cabinet for car out of floor.
- Rescue for power failure.
- Open/Closed door relevelling.
- Inputs for photocell, maximum load, excess weight, door close push button and firefighter key signals.
- Cabinet brand HIMEL IP-55 dimensions 700x600x200.



3VF CONTROLLERS WITH RESCUE UNIT



General features

Levels	24 standard/29 CAN-Bus
Regulations	En-81-1
Voltage	230V/400V (according to power supply)
Motor	5,5Cv-230V/10Cv-400V
Failure Indicator	yes, on card with LCD screen
Reset	yes
Connection	simplex / duplex / triplex / quadruplex using K2 communication wire
Transformer outputs	multitension 50, 60, 110, 120 et 210V
Series	110 VAC
Access code	optional

- Meets with the Europe Norm EN-81.1.
- Possibility of work as Simplex, Duplex, Triplex, Quadruplex.
- Programming Console integrated on the main board.
- Facility in the adjustment of multiple parameters using console: times, configurations, functions, etc.
- Information of failures indicating: failure code, failure description, date, time, speed of the car, destination, rearming type.
- Historical of failures (last 100 failures).
- Automatic detection and memorization of n° of stops, distance between stops and total travel time.
- Blockades of controller by excessive travel time.
- An only controller for all the kind of elevators.
- Possibility of work with traditional installation or CAN-Bus at client election.
- Fast interpretation of lift status using leds in the principal inputs/outputs signals.

- Transformer with multitension terminals for brake, cam and luminous indicators.
- Outputs: 45, 60, 100, 120 and 190 V.
- Output for binary positional indicator (Rotary or LCD display).
- Single-Phase and 3VF automatic door outputs.
- Inputs for photocell, maximum load, excess weight, door close push button and firefighter key signals.
- 3VF Controller includes: inverter, Filter, chokes and brake resistance.
- Fuji inverter 220V.
- Inverter is delivered programmed according to the characteristics of the installation.
- For installations where is needed an encoder we provide a Fuji OPC-G11S-PG card and a compatible encoder. (Optional)
- Automatic rescue with UPS + Batteries (Nickel/Cadmium) in case of power failure.
- Cabinet brand HIMEL IP-55 dimensions 800x600x300.

3VF CONTROLLERS

General Features

Levels	24 standard/29 CAN-Bus
Regulations	En-81-1
Voltage	230V/400V (according to power supply)
Motor	5,5Cv-230V/10Cv-400V
Failure indicator	yes, on card with LCD screen
Reset	yes
Connection	simplex / duplex / triplex / quadruplex using K2 communication wire
Transformer outputs	multitension 50, 60, 110, 120 et 210V
Series	110 VAC
Access code	optional



- Meets with the Europe Norm EN-81.1.
- Possibility of work as Simplex, Duplex, Triplex, Quadruplex.
- Programming Console integrated on the main board.
- Facility in the adjustment of multiple parameters using console: times, configurations, functions, etc.
- Information of failures indicating: failure code, failure description, date, time, speed of the car, destination, rearming type.
- Historical of failures (last 100 failures).
- Automatic detection and memorization of n° of stops, distance between stops and total travel time.
- Blockades of controller by excessive travel time.
- An only controller for all the kind of elevators.
- Possibility of work with traditional installation or CAN-Bus at client election.

- Fast interpretation of lift status using leds in the principal inputs/outputs signals.
- Transformer with multitension terminals for brake, cam and luminous indicators.
- Outputs: 45, 60, 100, 120 and 190 V.
- Output for binary positional indicator (Rotary or LCD display).
- Single-Phase and 3VF automatic door outputs.
- Inputs for photocell, maximum load, excess weight, door close push button and firefighter key signals.
- 3VF Controller includes: inverter, Filter, chokes and brake resistance.
- Fuji inverter 380V.
- Inverter is delivered programmed according to the characteristics of the installation.
- For installations where is needed an encoder we provide a Fuji OPC-G11S-PG card and a compatible encoder. (Optional)
- Cabinet brand HIMEL IP-55 dimensions 800x600x300.



3VF CONTROLLERS MRL WITH RESCUE UNIT GEARLESS



General features

Levels	24 standard/29 CAN-Bus
Regulations	En-81-1
Voltage	230 v / 400 v (according to power supply)
Motor	5,5Cv-230V/10Cv-400V
Failure indicator	yes, on card with LCD screen
Reset	yes
Connection	simplex / duplex / triplex / quadruplex using K2 communication wire
Transformer outputs	multitension 50, 65, 110, 120 et 210V
Series	110 VAC
Access code	optional

- Meets with the Europe Norm EN-81.1.
- Possibility of work as Simplex, Duplex, Triplex, Quadruplex.
- Programming Console integrated on the main board.
- Facility in the adjustment of multiple parameters using console: times, configurations, functions, etc.
- Information of failures indicating: failure code, failure description, date, time, speed of the car, destination, rearming type.
- Historical of failures (last 100 failures).
- Automatic detection and memorization of n° of stops, distance between stops and total travel time.
- Blockades of controller by excessive travel time.
- An only controller for all the kind of elevators.
- Possibility of work with traditional installation or CAN-Bus at client election.
- Fast interpretation of lift status using leds in the principal inputs/outputs signals.

- Transformer with multitension terminals for brake, cam and luminous indicators.
- Outputs: 45, 60, 100, 120 and 190 V.
- Output for binary positional indicator (Rotary or LCD display).
- Single-Phase and 3VF automatic door outputs.
- Inputs for photocell, maximum load, excess weight, door close push button and firefighter key signals.
- 3VF Controller includes: inverter, Filter, chokes, brake resistance.
- Frenic-Lift Fuji inverter 380V, prepare for encoder connection.
- Inverter is delivered programmed according to the characteristics of the installation.
- Automatic rescue with UPS.
- Compliance with electromagnetic compatibility regulations.
- Machine Room Less cabinet -Himel IP-55 2200x500x270.

3VF CONTROLLERS MRL
WITH RESCUE UNIT GEARLESS

General features

Levels	24 standard/29 CAN-Bus
Regulations	En-81-1
Voltage	230V/400V (according to power supply)
Motor	5,5Cv–230V/10Cv–400V
Failure indicator	yes, on card with LCD screen
Reset	yes
Connection	simplex / duplex / triplex / quadruplex using K communication wire
Transformer outputs	multitension 50, 65, 110, 120 et 210V
Series	110 VAC
Access code	optional



- Meets with the Europe Norm EN-81.1.
- Possibility of work as Simplex, Duplex, Triplex, Quadruplex.
- Programming Console integrated on the main board.
- Facility in the adjustment of multiple parameters using console: times, configurations, functions, etc.
- Information of failures indicating: failure code, failure description, date, time, speed of the car, destination, rearming type.
- Historical of failures (last 100 failures).
- Automatic detection and memorization of n° of stops, distance between stops and total travel time.
- Blockades of controller by excessive travel time.
- An only controller for all the kind of elevators.
- Possibility of work with traditional installation or CAN-Bus at client election.
- Fast interpretation of lift status using leds in the principal inputs/outputs signals.

- Transformer with multitension terminals for brake, cam and luminous indicators.
- Outputs: 45, 60, 100, 120 and 190 V.
- Output for binary positional indicator (Rotary or LCD display).
- Single-Phase and 3VF automatic door outputs.
- Inputs for photocell, maximum load, excess weight, door close push button and firefighter key signals.
- 3VF Controller includes: inverter, Filter, chokes, brake resistance.
- Frenic-Lift Fuji inverter 380V, prepare for encoder connection.
- Inverter is delivered programmed according to the characteristics of the installation.
- Automatic rescue with UPS.
- Compliance with electromagnetic compatibility regulations.
- Machine Room Less cabinet -Himel IP-55 2200x500x270.



3VF CONTROLLERS MRL WITH RESCUE UNIT



General Features

Levels	24 standard/29 CAN-Bus
Regulations	En-81-1
Voltage	230V/400V (according to power supply)
Motor	5,5Cv–230V/10Cv–400V
Failure Indicator	yes, on card with LCD screen
Reset	yes
Connection	simplex / duplex / triplex / quadruplex using K2 communication wire
Transformer outputs	multitension 50, 65, 110, 120 et 210V
Series	110 VAC
Access Code	optional

- Meets with the Europe Norm EN-81.1.
- Possibility of work as Simplex, Duplex, Triplex, Quadruplex.
- Programming Console integrated on the main board.
- Facility in the adjustment of multiple parameters using console: times, configurations, functions, etc.
- Information of failures indicating: failure code, failure description, date, time, speed of the car, destination, rearming type.
- Historical of failures (last 100 failures).
- Automatic detection and memorization of n° of stops, distance between stops and total travel time.
- Blockades of controller by excessive travel time.
- An only controller for all the kind of elevators.
- Possibility of work with traditional installation or CAN-Bus at client election.
- Fast interpretation of lift status using leds in the principal inputs/outputs signals.

- Transformer with multitension terminals for brake, cam and luminous indicators.
- Outputs: 45, 60, 100, 120 and 190 V.
- Output for binary positional indicator (Rotary or LCD display).
- Single-Phase and 3VF automatic door outputs.
- Inputs for photocell, maximum load, excess weight, door close push button and firefighter key signals.
- 3VF Controller includes: inverter, Filter, chokes and brake resistance.
- Fuji inverter 380V.
- Inverter is delivered programmed according to the characteristics of the installation.
- For installations where is needed an encoder we provide a Fuji OPC-G11S-PG card and a compatible encoder. (Optional)
- Automatic rescue with UPS + Batteries (Nickel/Cadmium) in case of power failure.
- Safety key for access to controller and key for access to rescue unit.
- Cabinet brand HIMEL IP-55 dimensions 2200x500x270.

PRE-ASSEMBLED WIRING ONLY IN CAR

Composed of:

- Inspection box with alarm and emergency light wired for all the control elements installed in car.
- Flat cable with Weidmuller brand connectors (depending on the equipment features).
- Shaft and car holders with fixing accessories.
- Car magnet positioning kit.
- Final limit and speed change stopper by bistable or electromechanical.
- Car operation panel wiring.

COMPLETE PRE-ASSEMBLED WIRING

CONTROLLER (ELECTRIC, HIDRAULIC, 3VF...), WITH WELDING STUDS (OPTIONAL)

Shaft wiring:

- Wire kit with fast connection connectors for series and push buttons separately.
- Box with pit stop, socket and shaft light switch.
- Box with phone call push button.
- Open cable for wires (closed on demand).
- Fixing accessories for cable and iron fittings.
- Holders for flat cable.

Car wiring:

- Flat cable with WAGO brand connectors (depending on the equipment features).
- Inspection box with alarm and emergency light with wiring for every car control element.
- Electromechanical Gervall brand final limit stoppers.
- Speed change electromechanical stoppers.
- Car magnet positioning kit.
- Kit of holders for every cable and bar.
- Fixing accessories.

Fixtures at the customer's choice (optional):

- 24 Vdc. push buttons with direction arrows.
 - Different types of fitting for full height/plate fixtures.
 - Emergency light.*
 - Dot matrix display* or liquid crystal display LCD.
 - Push buttons with light indicator or light and sound indicator.
 - Personalized logos.
 - Bidirectional MÉRAK brand intercom complying with present regulations.
 - Wiring of fixtures NO EDEL provided by the client.
- *Included in the price of the preassembled wiring if customers order it with the fixtures.



PUSHES
AND
COPs/LOPs



CERTIFICATE RoHS

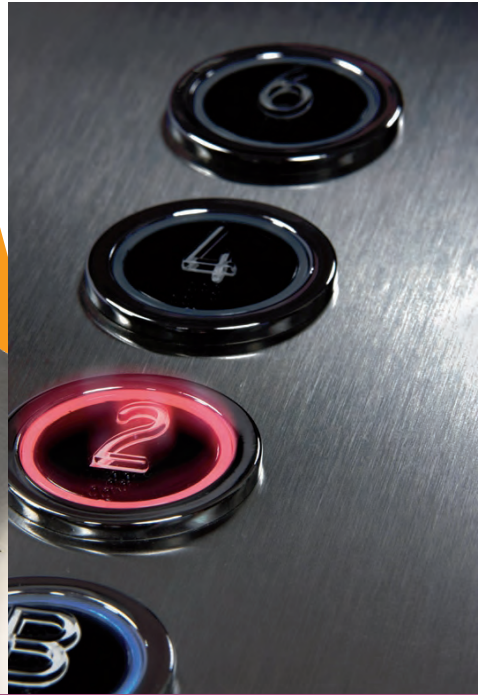
EDEL push buttons have been designed and developed to meet the need for a better service in terms of the Pre-Assembled Wiring delivery. Our product meets with the present regulations in manufacturing as the Normative EN 81-70 (Accessibility to lifts for persons including persons with disability).

Made in fireproofing plastic with a thick coat that avoids any damage, offers a modern and sophisticated design, fulfilling all the points in terms of contrast, mechanism, Braille, etc.

The electronic have been designed for maximum quality and durability. Rather than installing contacts "frog", we use a micro which ensure a long lifetime.

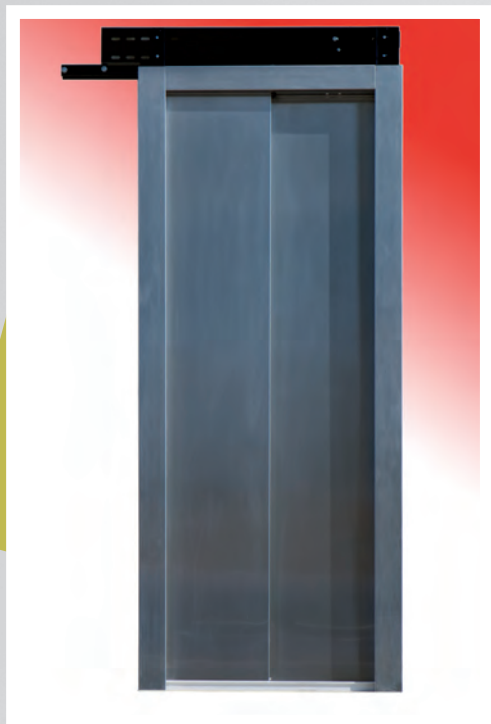
We met the current rules regarding appearance and finishes of push buttons also on the measures established between switches, pressure to the press, minimal height of the fixtures viewing angles, etc.

Possibility in two types of finishes: chrome and gold, protected with a thick coat to ensure maximum quality and durability.





DOOORS



Type	Clear width		Clear height	
	Min.	Max.	Min	Max
2PCO	500	2000	2000	Larguer libre maximale 3500mm dependant du passage libre
2PSO	500	2000		
3PSO	600	2500		
4PCO	1000	4000		
6PCO	1500	5000		
1PSO	500	1400		



Componentes de Tráfico Vertical
Pol. Ind. La Huertecilla, C/Generación nº44
29196 Málaga (Spain)
Telf.: +34 952 20 71 66
Fax: +34 952 20 32 91
E-mail: ctv@ctvlifts.com
www.ctvlifts.com